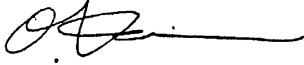




# SERVICE BULLETIN

PUBLICATION GROUP, AFTER SALES SERVICE DEP.  
MITSUBISHI MOTOR SALES EUROPE BV

<b>SERVICE BULLETIN</b>		No.: ESB-97E22-502	
		Date: 1999-07-15	<Model> <M/Y>
<b>Subject:</b>	CORRECTION TO TRANSMISSION GEAR RATIOS AND TO TIGHTENING TORQUES	(EC, EXP) CARISMA	96-10
<b>Group:</b>	MANUAL TRANSAXLE		
<b>CORRECTION</b>	 O. Kai - E.V.P. & G.M. After Sales Service Dept.		

### 1. Description:

This Service Bulletin informs you of correction to the transmission gear ratios and to tightening torques of the drain plug and the filler / level plug.

### 2. Applicable Manuals:

Manual	Pub. No.	Language	Page(s)
TRANSMISSION Workshop Manual	PWEE9508	(English)	22A-1-1,
	PWES9509	(Spanish)	22A-3-1,
	PWEF9510	(French)	22A-3-2a
	PWEG9511	(German)	
	PWED9512	(Dutch)	
	PWEW9513	(Swedish)	
	PWEI9508-b	(Italian)	

### 3. Details:

# 1. SPECIFICATIONS

## GENERAL SPECIFICATIONS

Items		Specifications	
Model		F5MR1, F5MR2	F5MR3
Type		Manual, 5-speed, front wheel drive	Manual, 5-speed, front wheel drive
Gear ratio	1st	3.363	<Correct>
	2nd	<del>2.074</del> ← <b>2.047</b>	<Incorrect>
	3rd	1.321	<Correct>
	4th	<del>0.967</del> ← <b>0.966</b>	<Incorrect>
	5th	<del>0.795</del> ← <b>0.794</b>	<Incorrect>
	Reverse	<del>3.550</del> ← <b>3.545</b>	<Incorrect>
Final reduction ratio		<del>4.067</del> ← <b>4.066</b>	<Incorrect>

<Incorrect>

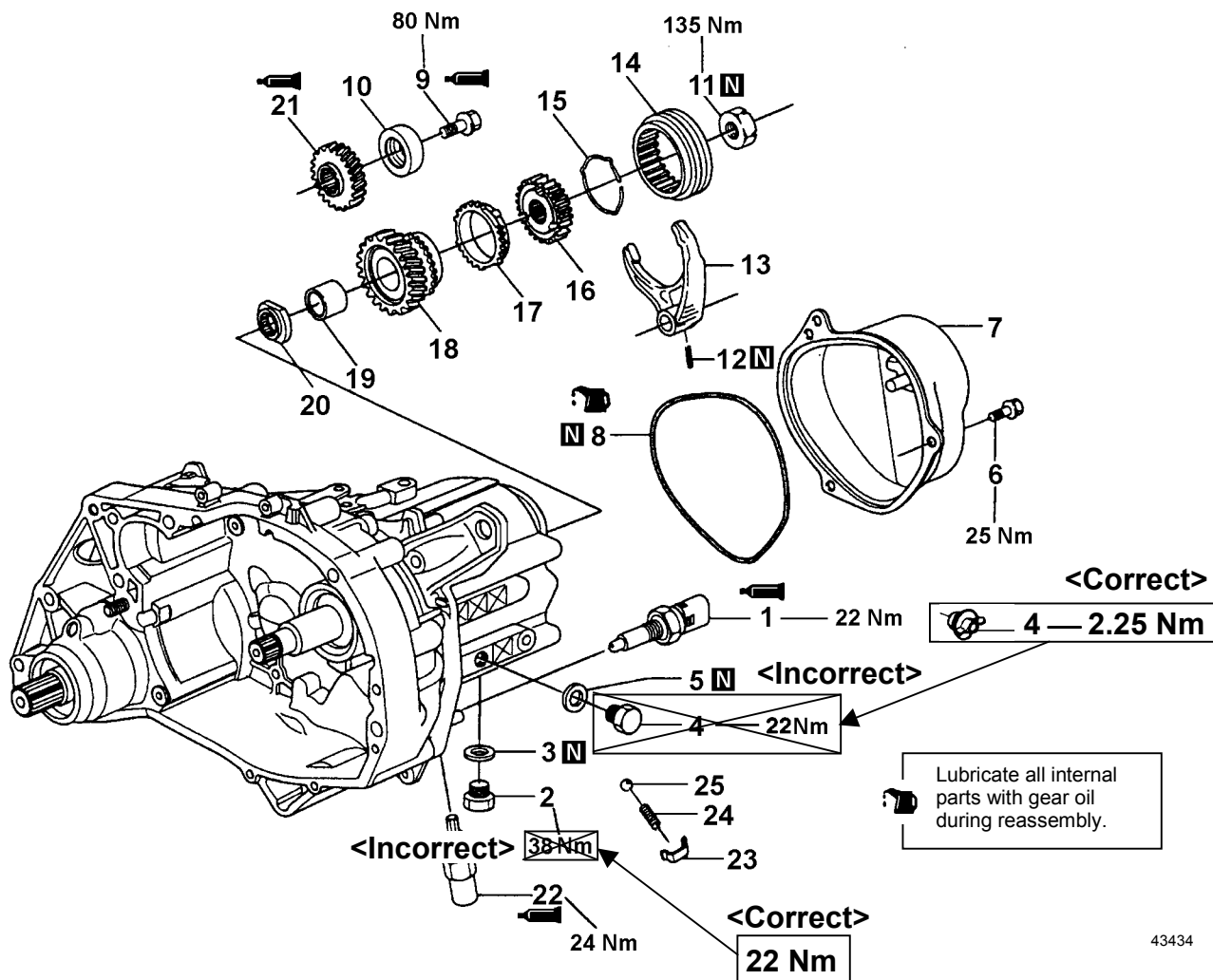
## TORQUE SPECIFICATIONS

Items	Specifications (Nm)
Bearing housing bolts	25
Input shaft lock nut	135
Output shaft bolt	80
Cover bolts	25
Locating pin	24
Back-up lamp switch	22 <Correct>
Drain plug	<del>38</del> ← <b>22</b>
Filler/level plug	<del>22</del> ← <b>2.25</b> <Incorrect>
Sealing plugs	25
Guide bushing bolts <F5MR3>	25
Differential nut <F5MR3>	130

### 3. TRANSMISSION

xxx

#### DISASSEMBLY AND REASSEMBLY <F5MR1, F5MR2>

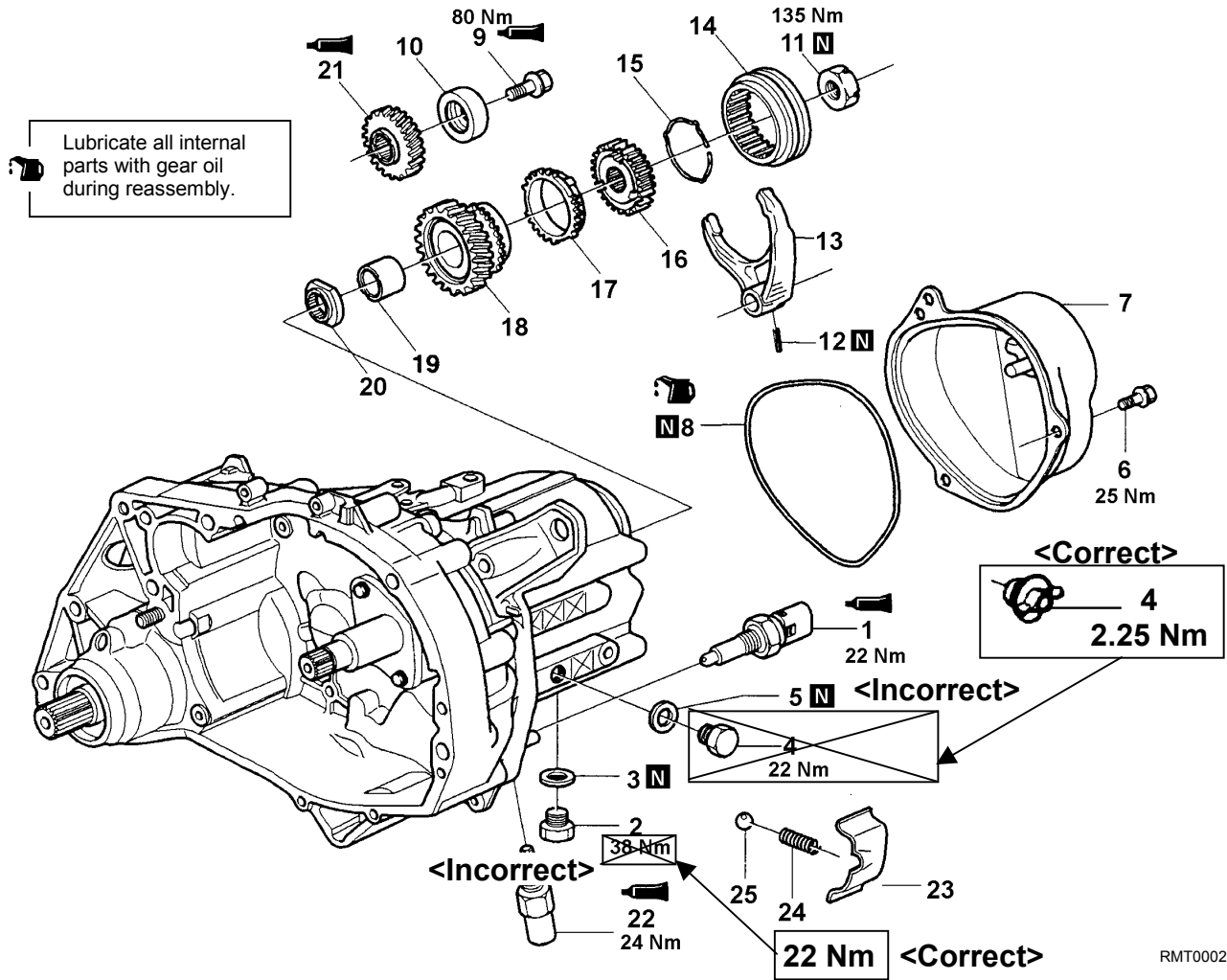


#### Disassembly steps

- |     |                        |     |     |                         |
|-----|------------------------|-----|-----|-------------------------|
| ▶Z◀ | 1. Back-up lamp switch | ◀C▶ | ▶V◀ | 14. Synchronizer sleeve |
| ◀A▶ | ▶Y◀                    | ◀D▶ | ▶V◀ | 15. Synchronizer spring |
| ◀A▶ | ▶Y◀                    | ◀D▶ | ▶V◀ | 16. Synchronizer hub    |
| ◀A▶ | ▶Y◀                    | ◀D▶ | ▶T◀ | 17. Synchronizer ring   |
| ◀B▶ | ▶W◀                    | ◀D▶ | ▶T◀ | 18. 5th speed gear      |
| ◀B▶ | ▶W◀                    | ◀D▶ | ▶T◀ | 19. Bearing sleeve      |
| ◀B▶ | ▶W◀                    | ◀D▶ | ▶T◀ | 20. Retaining ring      |
| ◀C▶ | ▶X◀                    | ◀E▶ | ▶U◀ | 21. 5th gear wheel      |
| ◀C▶ | ▶V◀                    | ◀F▶ | ▶S◀ | 22. Locating pin        |
|     |                        | ◀G▶ | ▶R◀ | 23. Cover plate         |
|     |                        | ◀G▶ | ▶R◀ | 24. Poppet spring       |
|     |                        | ◀G▶ | ▶R◀ | 25. Poppet ball         |

43434

DISASSEMBLY AND REASSEMBLY <F5MR3>



RMT0002

Disassembly steps

- ▶Z◀ 1. Back-up lamp switch
- ▶A◀ ▶Y◀ 2. Drain plug
- ▶A◀ ▶Y◀ 3. Gasket
- ▶A◀ ▶Y◀ 4. Filler plug
- ▶B◀ ▶W◀ 5. Gasket
- ▶B◀ ▶W◀ 6. Bolt
- ▶B◀ ▶W◀ 7. Rear cover
- ▶B◀ ▶W◀ 8. O-ring
- ▶B◀ ▶W◀ 9. Bolt
- ▶B◀ ▶W◀ 10. Shim
- ▶B◀ ▶W◀ 11. Lock nut
- ▶C◀ ▶X◀ 12. Spring pin
- ▶C◀ ▶V◀ 13. 5th speed shift fork

- ▶C◀ ▶V◀ 14. Synchronizer sleeve
- ▶D◀ ▶V◀ 15. Synchronizer spring
- ▶D◀ ▶V◀ 16. Synchronizer hub
- ▶D◀ ▶T◀ 17. Synchronizer ring
- ▶D◀ ▶T◀ 18. 5th speed gear
- ▶D◀ ▶T◀ 19. Bearing sleeve
- ▶D◀ ▶T◀ 20. Retaining ring
- ▶E◀ ▶U◀ 21. 5th gear wheel
- ▶F◀ ▶S◀ 22. Locating pin
- ▶G◀ ▶R◀ 23. Cover plate
- ▶G◀ ▶R◀ 24. Poppet spring
- ▶G◀ ▶R◀ 25. Poppet ball